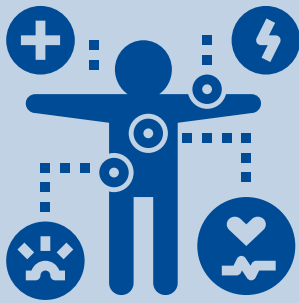




EVANSVILLE DAY SCHOOL

2021-22 MEDICAL POLICY

Evansville Day School's medical policies were developed by the school administration and nurse, using resources from the Indiana Health Department and Centers for Disease Control and Prevention guidelines.



SYMPTOMS

People with COVID-19 have a range of symptoms which may appear 2-14 days after exposure. The CDC list of symptoms include: fever of 100.4° (+), uncontrolled cough that causes difficulty breathing, severe headache, sore throat, loss of taste or smell, congestion, diarrhea, nausea or vomiting, and abdominal pain.*



FEVER POLICY

Students are required to check their temperature daily before coming to school. Temperatures of 100.4° (+) must stay home.

Students must be fever-free for a minimum of 24 hours without the use of acetaminophen or ibuprofen before returning to school.



DISMISSAL

Students with a 100.4° (+) fever will be immediately sent home from school.

Students exhibiting one or more COVID-19 symptoms but no fever will be immediately isolated on campus. The nurse will contact parent(s) for consultation but will have final authority whether or not to send a fever-free student home from school.



CONTACT

Anna Vance, BSN, RN
School Nurse

812-476-3039
avance@evansvilledayschool.org

*Please contact the school nurse to discuss any symptoms if in question.